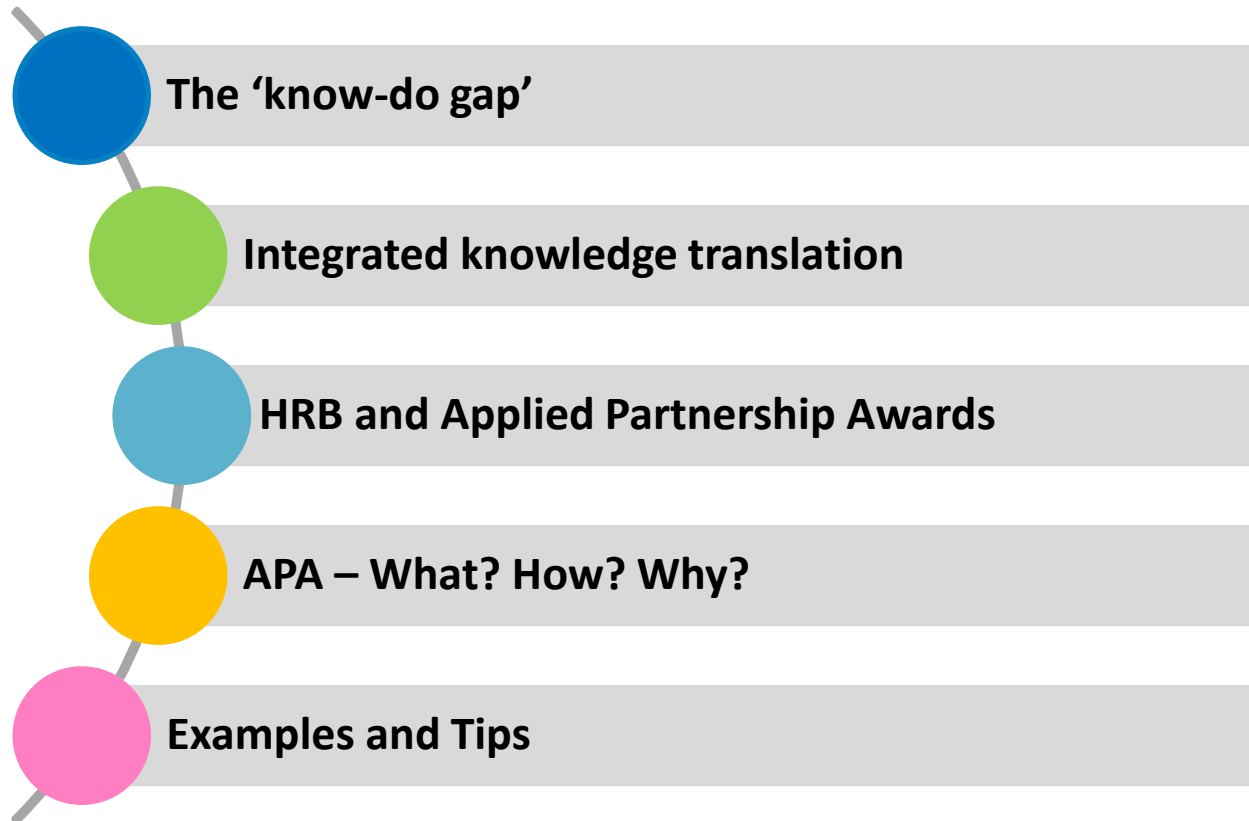



A partnership approach to reducing the 'know-do gap' and applying research to practice

Dr Catherine Gill, Health Research Board

Outline



A woman in a dark suit stands on the peak of a dark, mossy rock formation on the left, holding a white megaphone to her mouth. On the right, a man in a dark suit stands on the peak of a similar rock formation, holding a black briefcase. The two rock formations are separated by a gap, with the ocean and white-capped waves visible in the distance between them. The sky is a pale, overcast blue.

“Reducing this ‘know-
do gap’ is one of the
ethical imperatives of
our time”

Dr Ian Graham,
U Ottawa

Getty Images

Problem

A gap between what is known from research and the care that is provided in health systems.

- health research is conducted with the expectation that it advances knowledge and eventually translates into improved health systems and population health
- research findings are sometimes not acted upon in a timely way or are not applied at all
- society and health systems are not optimally benefiting from investments in research
- also about a gap between what is needed and what is researched, and how findings are presented in a way that is useful

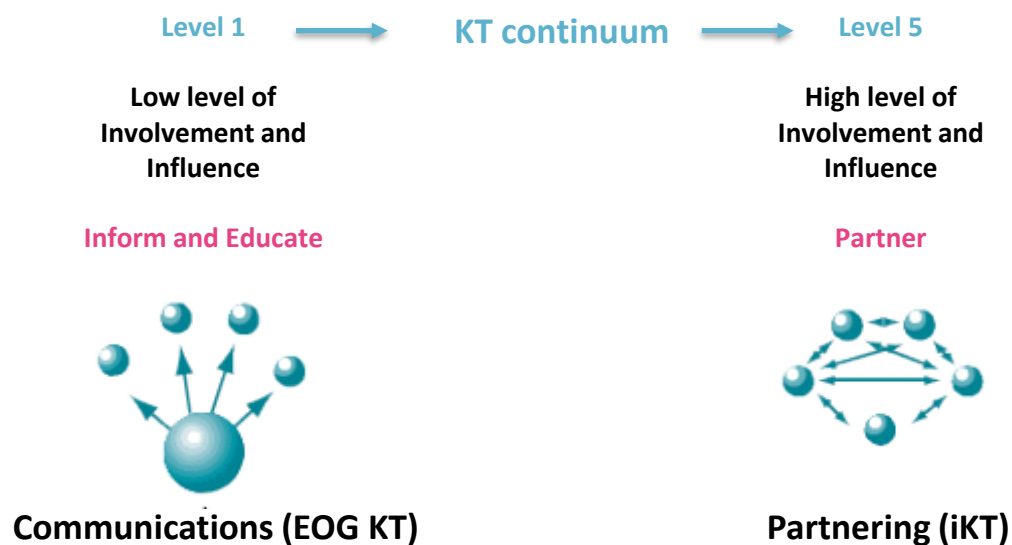


Solution?

Integrated knowledge translation (iKT)

“A model of collaborative research, where researchers work with knowledge users who identify a problem and are in a position to act on the research findings.”

<https://iktrn.ohri.ca/aboutus/what-is-ikt/>



Adapted from Patterson Kirk Wallace

HRB role?

Mission: support research that improves people's health, promotes evidence-informed care and creates solutions to societal challenges.



Objective 1



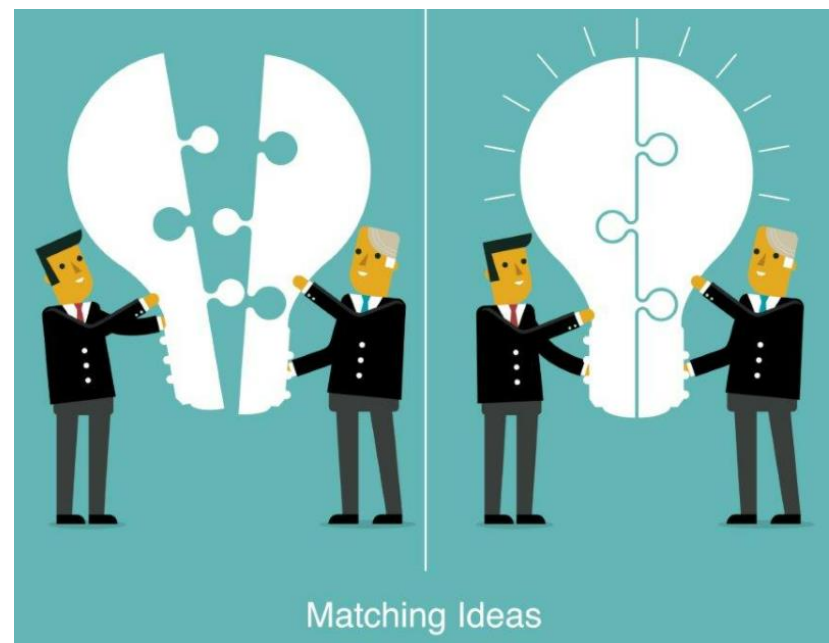
**Invest in research that
delivers value for health,
the health system, society,
and the economy**

*Research that
makes a difference*

Strategy
2021–2025

Applied Partnership Awards (APA)

- Engaging 'knowledge users' in the research process from idea formulation to dissemination and implementation to ensure that findings are relevant and responsive, and can influence decision making in the health and social care system (iKT)
- Provides co-funded support for research projects that are co-created by a partnership of knowledge users and researchers.
- Supports projects that are priority-driven, nationally relevant and determined by the needs of the Irish health and social care system.



Definition of Knowledge User

- ✓ one in a position of authority to influence and/or make decisions about health policy or the delivery of services
- ✓ can act to ensure that the findings of the research will be translated to influence decision making and change within their (or other) organisations.
- ✓ typically managers, policy makers, clinicians, health professionals or others who can make significant changes to policy or practice.

Knowledge user organisations

Government departments, the HSE, other agencies, hospitals or hospital groups, community healthcare organisations, local government, voluntary organisations, research charities, patient/consumer groups etc

What makes the APA scheme different?

1. Partnership and knowledge user engagement is a **requirement**. Underpinned by **co-funding** commitment.
2. Two closing dates with **staggered deadlines** and distinct review processes.
3. Applied projects that have the potential for application/impact within a relatively **short timeframe** of one to two years

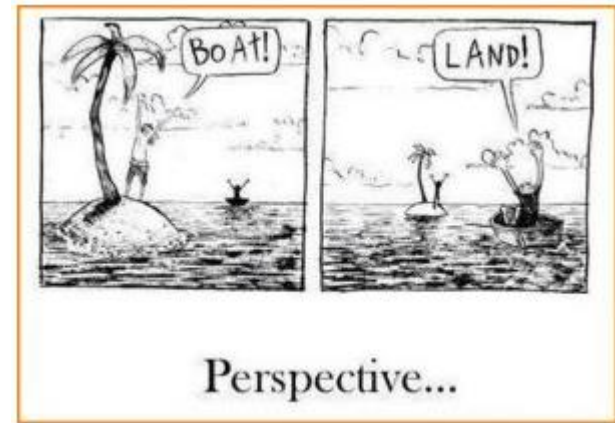


What's in it for applicants?



Collaboration: fruitful partnerships that last long beyond the research project

Insight: How the other half lives...



Manageability: 12-24 months can be a more manageable commitment

Communication: learning to communicate to the right audience in a way that they find useful



What's in it for applicants?

❖ Potential for Impact:

question that someone really needs an answer to



working in partnership



strong pathway to translating answers into impact



Examples of funded projects I

SAFE: Systematic Approach to improving care for Frail Elderly patients (APA-2016)

Need

Alternative models of care for frail older patients

Approach

Explored current problems with care pathways for older people presenting to SVUH to inform development of a best practice pathway for the care of frail older people in acute hospitals.

Outcomes

Relationships – co-design and PPI

Change – new frailty pathway

Wider impact - adapted in other locations



<https://www.nmhs.ucd.ie/clinical-engagement/safe-systematic-approach-improving-care-frail-older-patients>

Examples of funded projects II

Resource Allocation, Priority-Setting and Consensus in Dementia Care in Ireland (APA-2016)

Need: Information to support decision making for resource allocation for dementia care

Approach

Explored optimal service and support mix for people with dementia to facilitate a more efficient and equitable resource allocation process that includes the delivery of personalised, community-based supports for people with dementia.

Outcome:

Relationships – more productive and practical researcher/KU, PPI

Change - information to support decision making

Wider Impact – informing development of a new model of dementia care for Ireland



2019 Cycle 2 Awards

Meeting the Challenge of **Childhood Obesity** Treatment in Irish Healthcare: Generating Data to Facilitate Action

National Helicobacter pylori **antibiotic resistance** surveillance to guide clinical practice

The effect of after action review in enhancing **safety culture** and second victim experience and its implementation in an Irish hospital

Enhancing healthcare transition and longitudinal care for adolescents and adults with **spina bifida and/or hydrocephalus** in Ireland.

Maximising the quality of **stroke care** in Ireland – Development of a National Stroke Audit

Practice Enhancement for Exclusive **Breastfeeding** (PEEB)

Knowledge User Organisations:

HSE, Hospitals, Charity, National Clinical Programme, Department of Health

Tips for preparing APA submission



❖ Read Guidance Notes Carefully

APA 2022 – Further details

Closing date Cycle 1:
28 April 2022

Closing date cycle 2:
February 2023

Contact:
Ailbhe Lamont
alamont@hrb.ie



<https://www.hrb.ie/funding/funding-schemes/all-funding-schemes/grant/applied-partnership-awards-apa-2022/>

hrb.ie



Find out more
about our work

